

M-XStable Prestained Protein Ladder

Cat. # L2010, L2011

Introduction: M-XStable Prestained Protein Ladder is a three-color protein standard with 10 pre-stained proteins covering a wide range molecular weights for 10 to 180 kDa. Proteins are covalently coupled with a blue chromophore except for two reference bands (one green and one red band at 25 kDa and 75 kDa, respectively) when separated on SDS-PAGE (Tris-glycine buffer). The M-XStable Prestained Protein Ladder is designed for monitoring protein separated during SDS-polyacrylamide gel electrophoresis, verification of Western transfer efficiency on membranes (PVDF, nylon, or nitrocellulose) and for approximate sizing of proteins. The ladder is supplied in gel loading buffer and is ready to use. Do not heat, dilute, add reducing agent before loading.

Size: 500 µl (Cat.# L2010), 6X500 µl (Cat.# L2011)

Range: ~10 kDa to ~180 kDa

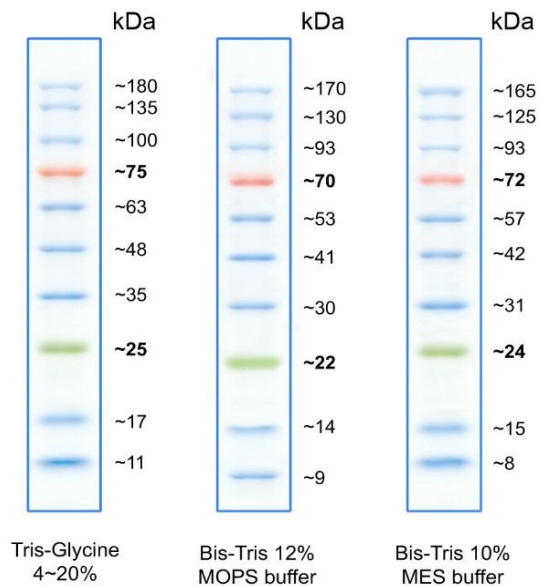
Number of bands: 10

Concentration: Approximately 0.2~0.4 mg/ml of each protein in buffer (20 mM Trisphosphate pH 7.5 at 25°C), 2% SDS, 0.2 mM Dithiothreitol, 3.6 M Urea, and 15% (v/v) glycerol).

Recommended Load:

- 3 µl or 5 µl per loading for clear visualization during electrophoresis on 15-well or 10-well mini-gel, respectively
- 2~3 µl per well for general Western transferring.
- Apply more for thicker (>1.5 mm) or larger gel.

Image:



Stability: Stable for up to 2 weeks at 25°C
Stable for up to 3 months at 4°C
For long term storage, store at -20°C (Recommended)

